

# Tip\$ and Tale\$

A monthly publication



We have gift cards available starting at \$25. \$4.00 loading fee

www.peninsulafcu.com  
December 2015  
Volume 50  
Issue 12

301 North 30th Street, P.O. Box 717, Escanaba, MI 49829-0717 906-789-6400 / 888-791-6420  
7126 County 426 M.5 Road, P.O. Box 717, Escanaba, MI 49829-0717 906-786-2732 / 888-547-2732  
3700 10th Street, P.O. Box 367, Menominee, MI 49858-0367 906-863-5382

We would like to take this opportunity to wish you and your family a wonderful holiday season from the Board of Directors and staff of Peninsula Federal Credit Union.

## HOLIDAY HOURS:

**MERRY CHRISTMAS  
&  
HAPPY NEW YEAR!**

**Thursday, December 24th**  
Main Office: 8:30am - 1pm  
Mill Office: 9am - 1pm  
Menominee Office: 9am - 1pm

**Thursday, December 31st**  
Main Office: 8:30am - 1pm  
Mill Office: 9am - 1pm  
Menominee Office: 9am - 1pm

**Friday, December 25th**  
All Offices: CLOSED

**Friday, January 1st**  
All Offices: CLOSED



Are you dreaming of a green Christmas? We can help! Get up to \$2,000 for 12 months at just 2.99% APR\*. Use it for stocking stuffers, gifts under the tree or whatever you like. That should help make your spirits bright! Don't forget, you can sign for it wherever you are with our convenient & easy to use Secure E-Signature. Hurry, this offer is available until December 18th!

\*APR= Annual Percentage Rate, all loans are subject to credit approval.

Are you dreaming of a GREEN Christmas?  
We have Christmas loans available!

**Peninsula  
FEDERAL CREDIT UNION**

## TruStage Health Insurance Program: Saving on health insurance can be easy.

You could save **\$434.39** a month on health insurance<sup>1</sup>.  
Enroll by January 31.

**Act Now! Call 1-888-416-2166 or go to TruStageHealth.com today.**



<sup>1</sup>Families eligible for the Advance Premium Tax Credit saved an average of \$434.39 per month on their health insurance when they shopped through GoHealth (2015 OE). The TruStage® Health Insurance Program is made available through TruStage Insurance Agency, LLC and GoHealth, LLC. GoHealth, LLC is licensed to sell nationwide and operates in all states with the exception of Massachusetts, Hawaii, Vermont and Rhode Island. TruStage Insurance Agency, 2015, All Rights Reserved.

Several of our employees and their family members took part in this year's Christmas parade in Menominee. The parade was held on Friday, November 13th at 6pm. The theme for this year's parade was The Nutcracker.



## Save To Win

### NOVEMBER WINNERS

Richard Derouin - \$75

Christopher Walechka - \$25

### STATE WIDE WINNERS

Mary Larson, Kevin Bellmore

& Rebecca Oswald - \$50



Join us at any office  
December 21st through  
December 24th for  
cookies & coffee.



Congratulations to Brandon O. and Mary K. They are the winners of a \$50 VISA gift card for this quarter's report card drawing. Each quarter, bring your child's report card to any office and get entered to win.

A's = 2 entries B's = 1 entries

Congratulations and keep up the great work!



Save the Date! Our 75th annual meeting will be held February 20th 2016. More information to follow in next month's Tips and Tales!

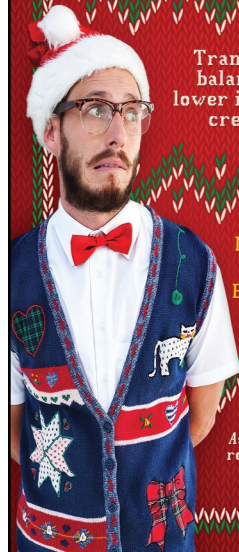


HOLIDAY  
DEBT  
IS  
EVEN UGLIER

Transfer your balance to our lower interest rate credit card.

Less interest.  
Lower fees.  
Better looking  
2016

Ask a credit union representative for details.



Help Toys for Tots by generously donating cash or a new toy for local children this Christmas season. Each donation made earns an entry to win a \$25 Visa gift card. Thank you!

### VISA GIFT CARD GIVEAWAY

By submitting this entry form, you are giving permission to publish your name in a future issue of "Tips and Tales" if you are chosen as a winner.

Name \_\_\_\_\_  
Phone \_\_\_\_\_

### VISA GIFT CARD DRAWING

Once a month, this Credit Union selects a lucky member to receive a \$30.00 VISA Gift Card. Simply fill out the coupon provided or one available at any of our offices and deposit it in the drawing box. This month's winner is Adam Demeuse. Congratulations and thank you for being a member.