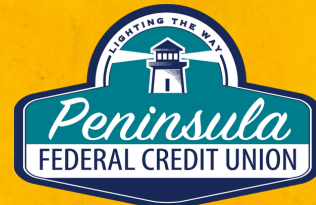


TIP\$ & TALE\$



2929 3rd Ave N. | Escanaba | MI 49829-0717
7126 Co. 426 M.5 Rd | Escanaba | MI 49829-0717
3700 10th St | Menominee | MI 49858

906-789-6400 | 888-791-6420
906-786-2732 | 888-547-2732
906-863-5382

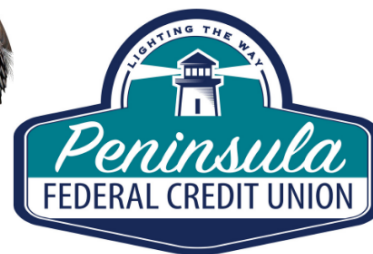
UPDATE ON HEADQUARTERS!

WE HAVE A TENTATIVE OPEN DATE OF OCTOBER 28! THE N 30TH OFFICE WILL BE CLOSED OCTOBER 24- 27 TO ALLOW STAFF & TECHNOLOGY TO MOVE TO THE NEW BUILDING. THE MILL OFFICE WILL BE CLOSED OCTOBER 24. IF YOU NEED ASSISTANCE DURING THIS TIME, OUR MENOMINEE OFFICE WILL REMAIN OPEN. PHONE LINES, MOBILE BANKING AND ALL ONLINE BANKING WILL BE AVAILABLE! DUE TO COVID, A VIRTUAL TOUR WILL BE AVAILABLE OF THE NEW HEADQUARTERS AS WE WILL NOT BE HAVING A TRADITIONAL GRAND OPENING. WE HOPE TO HAVE A CELEBRATION IN THE NEAR FUTURE.

EARLY BIRD LOAN SPECIAL



Rates as low as 2.99% APR
October 1 - November 12



Borrow up to \$2500 for 24 months



YOU
DESERVE A BETTER
CREDIT CARD RATE



PENINSULAFCU.COM

Intro rate of 2.99% APR*
On new cards and balance transfers
for 18 months!
Offer valid
October 1st - December 31st 2020
Call or stop in for more details!
***Annual Percentage Yield**

ANNUAL MEETING - 2020

DUE TO COVID, THE ANNUAL MEETING WILL BE HELD VIRTUALLY ON THURSDAY, NOVEMBER 19TH AT 3:30 PM. IF YOU WOULD LIKE TO PARTICIPATE, PLEASE RSVP TO DEBRA AT 906-789-6400 WITH YOUR NAME AND EMAIL.

Double Your Reward Points

On Gas & Grocery purchases now thru December 31, 2020

Offer valid only on signed purchases for the Rewards or Business Visa Credit Card



CLOSED DATES

11/26/2020 - THANKSGIVING
12/24/2020 - CHRISTMAS EVE
(CLOSE AT 1:00 PM)
12/25/2020 - CHRISTMAS DAY



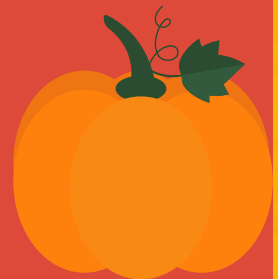
Dividend information for October 2020

DIVIDEND RATE

ANNUAL PERCENTAGE YIELD

REGULAR SHARES	.10 %	.10 %
SHARE DRAFT	.05 %	.05 %
HSA	.10 %	.10 %
MONEY MARKET		
Less Than \$10,000	.10 %	.10 %
\$10,000 to \$24,999.99	.20 %	.20 %
\$25,000 to \$49,999.99	.30 %	.30 %
\$50,000 to \$499,999.99	.40 %	.40 %
\$500,000 and Higher	.50 %	.50 %

Rates are declared by the Board of Directors and paid quarterly from available earnings!



We are rated
5-STARS
by BauerFinancial

Recognized as one of
the strongest financial
institutions in the country.



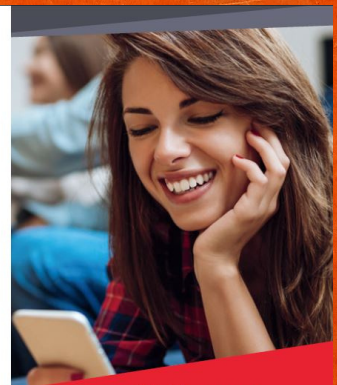
Top Deals

Sprint

intuit
turbotax.

TruStage™

Get more from your credit
union membership at
LoveMyCreditUnion.org



Love My
Credit Union®
rewards

121 CONSECUTIVE QUARTERS

WE ARE FINANCIALLY STRONG
FOR OUR MEMBERS!

Credit Union Week- October 12-16

A Week to Celebrate Our Members!

Monday - Open a new Save to Win or Sign up for Debit Card Round Up all week to have a chance to win \$100 cash

Tuesday - CU Local Lunch Buy your lunch at your favorite local restaurant

Wednesday - Scorecard and Perks Point Giveaway

Thursday - Drawings for Gift Cards & Gift Basket

Friday - Homemade Sugar Cookies & 2021 Calendar Distribution

Pumpkin Carving Contest!

During Credit Union week we would like to see your children's pumpkin carving/painting skills! Text a picture of your pumpkin to 906-789-6400 or email to sdecremer@peninsulafcu.com! We will showcase all the pictures we get on Facebook and Instagram.

Winner will be picked on Friday, October 16th.



coming soon
coming soon
coming soon
coming soon
coming soon
coming soon



New ATM Technology Coming Soon!

Our Escanaba Headquarter Drive Thru will have new ITMs available! Stay tuned!

Lets talk Statistics

Total Assets – \$215,592,403

Total Loans – \$181,330,481

Total Deposits – \$193,575,129

Members – 12,801

PEOPLE HELPING PEOPLE

In 2020, PFCU and their staff have donated to many local virtual fundraisers. Together, we are community strong!



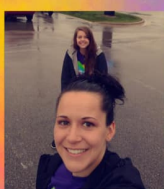
Delta County Chamber of Commerce Century Ride



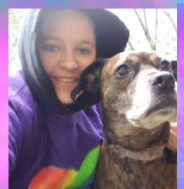
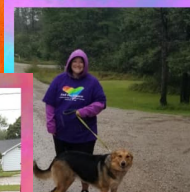
Pregnancy Services of Delta County



4-H Livestock Expo Purchases



End the Silence Virtual Walk



Off the Vine Lions Club Walk/Run